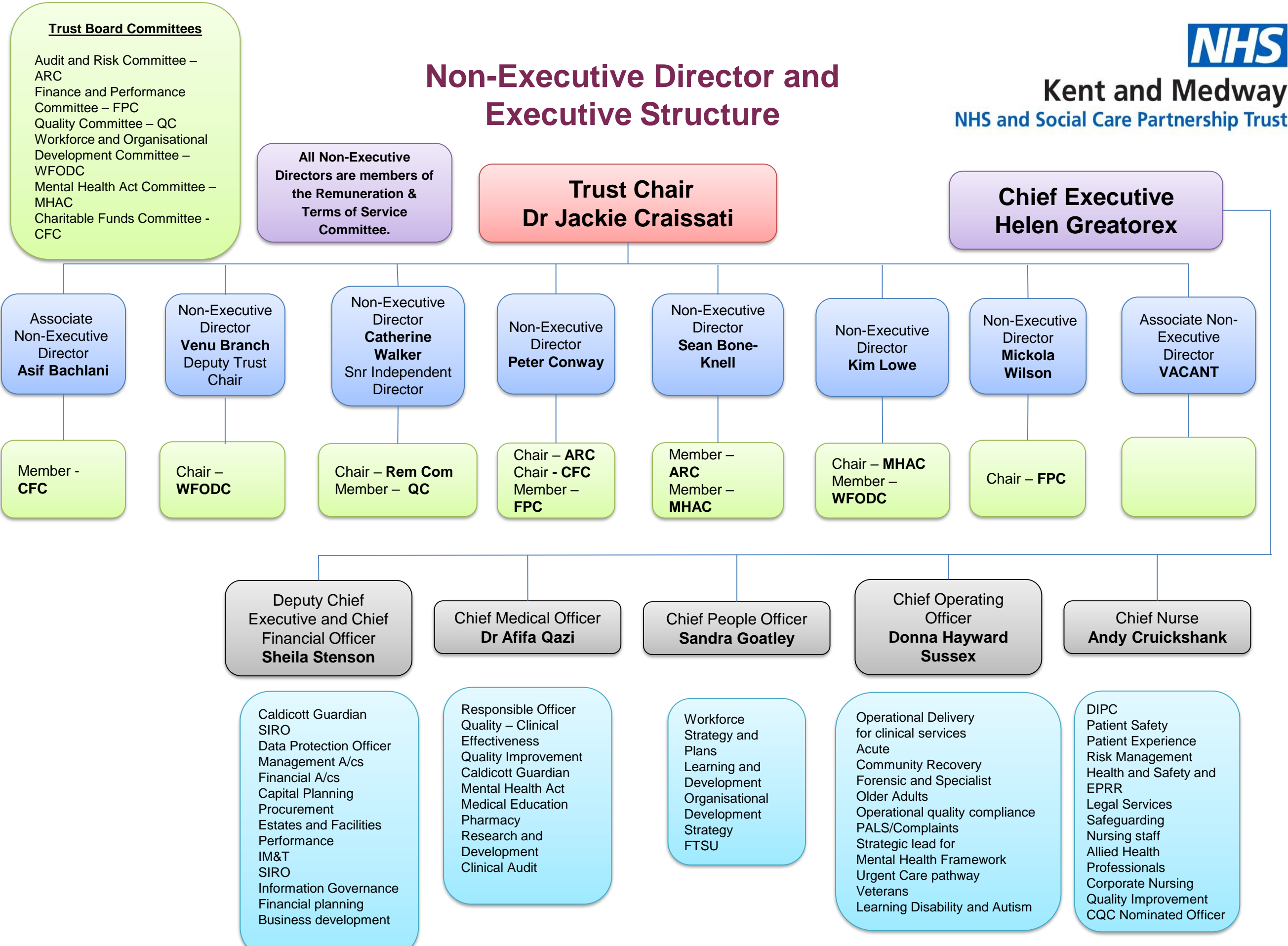


Non-Executive Director and Executive Structure



- Trust Board Committees**
- Audit and Risk Committee – ARC
 - Finance and Performance Committee – FPC
 - Quality Committee – QC
 - Workforce and Organisational Development Committee – WFODC
 - Mental Health Act Committee – MHAC
 - Charitable Funds Committee - CFC

All Non-Executive Directors are members of the Remuneration & Terms of Service Committee.

Trust Chair
Dr Jackie Craissati

Chief Executive
Helen Greatorex

Associate Non-Executive Director
Asif Bachlani

Member -
CFC

Non-Executive Director
Venu Branch
Deputy Trust Chair

Chair –
WFODC

Non-Executive Director
Catherine Walker
Snr Independent Director

Chair – **Rem Com**
Member – **QC**

Non-Executive Director
Peter Conway

Chair – **ARC**
Chair - **CFC**
Member – **FPC**

Non-Executive Director
Sean Bone-Knell

Member – **ARC**
Member – **MHAC**

Non-Executive Director
Kim Lowe

Chair – **MHAC**
Member – **WFODC**

Non-Executive Director
Mickola Wilson

Chair – **FPC**

Associate Non-Executive Director
VACANT

Deputy Chief Executive and Chief Financial Officer
Sheila Stenson

- Caldicott Guardian
- SIRO
- Data Protection Officer
- Management A/cs
- Financial A/cs
- Capital Planning
- Procurement
- Estates and Facilities
- Performance
- IM&T
- SIRO
- Information Governance
- Financial planning
- Business development

Chief Medical Officer
Dr Afifa Qazi

- Responsible Officer
- Quality – Clinical Effectiveness
- Quality Improvement
- Caldicott Guardian
- Mental Health Act
- Medical Education
- Pharmacy
- Research and Development
- Clinical Audit

Chief People Officer
Sandra Goatley

- Workforce Strategy and Plans
- Learning and Development
- Organisational Development
- Strategy
- FTSU

Chief Operating Officer
Donna Hayward Sussex

- Operational Delivery for clinical services
- Acute
- Community Recovery
- Forensic and Specialist
- Older Adults
- Operational quality compliance
- PALS/Complaints
- Strategic lead for
- Mental Health Framework
- Urgent Care pathway
- Veterans
- Learning Disability and Autism

Chief Nurse
Andy Cruickshank

- DIPC
- Patient Safety
- Patient Experience
- Risk Management
- Health and Safety and EPRR
- Legal Services
- Safeguarding
- Nursing staff
- Allied Health Professionals
- Corporate Nursing
- Quality Improvement
- CQC Nominated Officer