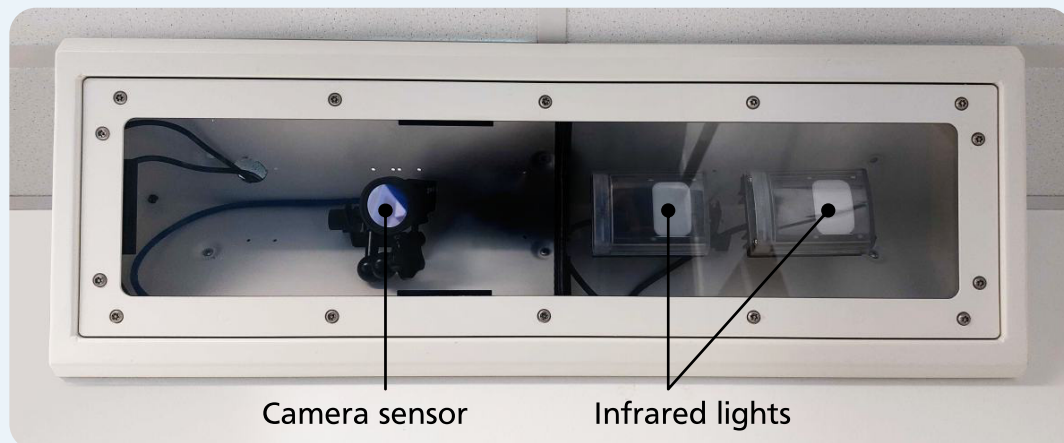


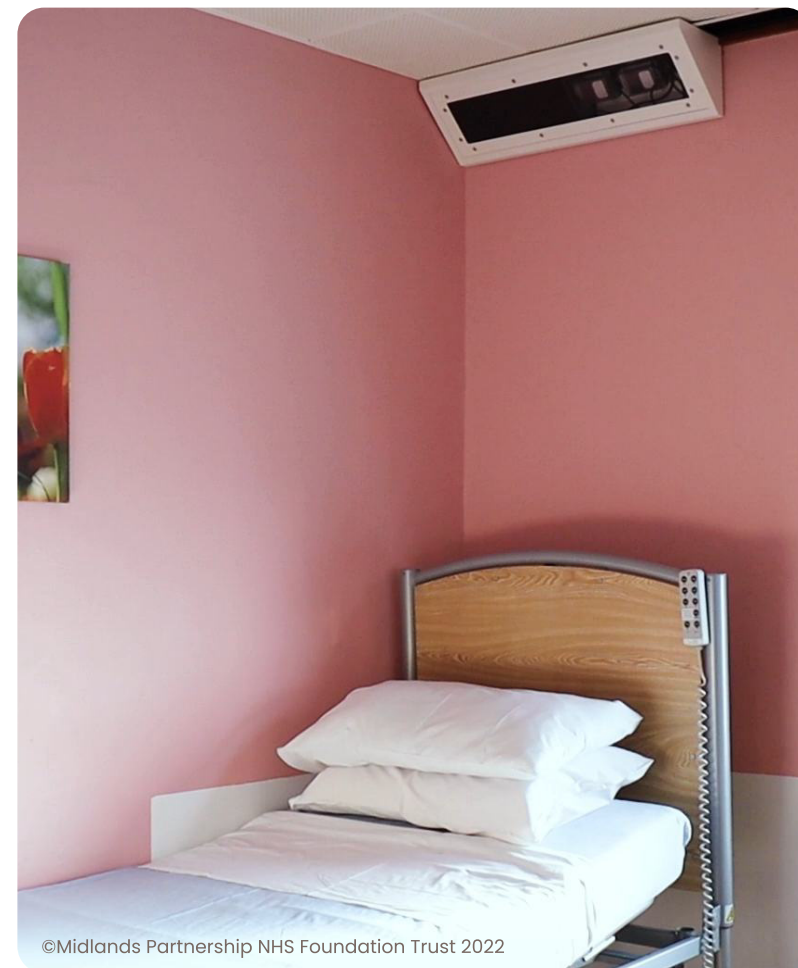
### What Oxevision does

- It is a medical device that uses an infrared-sensitive camera to measure your pulse and breathing rate
- It lets staff know where you are in your room
- It provides notifications to staff as explained on the next page
- It shows staff how active you've been — it tells staff how long you've been resting and how long you've been active
- It tells staff how long you've slept for each day
- It does not replace the staff care you receive during your stay
- You may notice a red "glow" from the unit in your bedroom. This is the infrared light which is on all the time and is not a sign that the camera is working



### Where Oxevision is located

- In the bedrooms within the seclusion suite



## SECLUSION

### What staff can see



**Staff receive information and notifications** on a dedicated monitor in the lobby of the seclusion suite

There are 2 types of notifications:

1. **In Bathroom:** When you enter the bathroom
2. **No Activity:** When you are in your room and no movement has been detected for a prolonged time

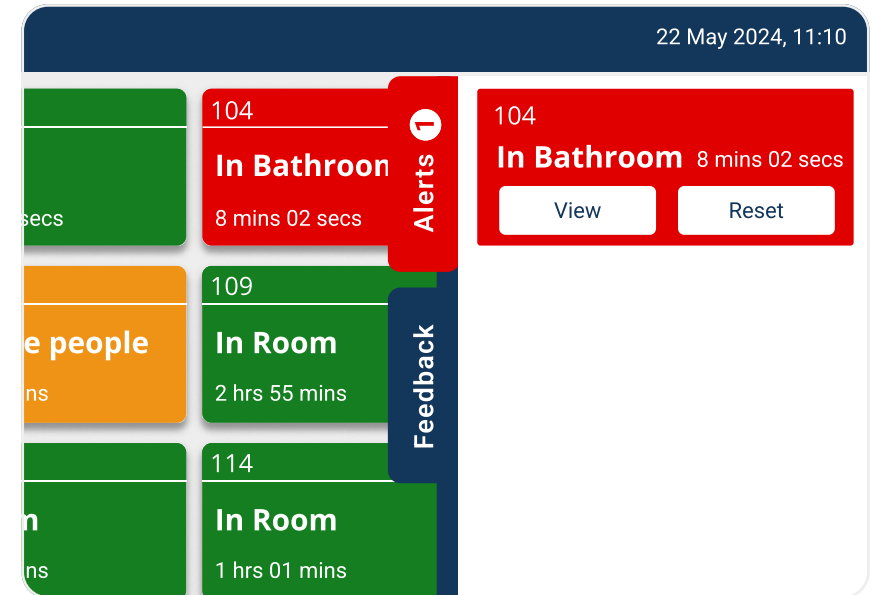
Staff can also:



**Measure your pulse and breathing rate**



**Receive information on your active and resting periods;** which you can discuss with your named clinician



**Staff cannot monitor all your activity**

**If you need assistance always speak to a member of staff**

## When staff can see you in your room

A clear image can be seen for up to 15 seconds only **when checking your pulse and breathing rate**



A **blurred** image can be seen for up to 15 seconds only **when a notification has been received**



**Staff have no access to clear recorded images**

## How your privacy is protected

- Your personal data is protected by NHS regulation and national law
- Clear video images are recorded but automatically deleted after 24 hours
- All other retained data is anonymous (non-personal) and is only used to ensure Oxevision is working as it should
- Requests can be made for recorded images to be obtained by staff when there is a safety incident
- If recorded images are used for a safety review, you have the right to be informed
- For further information see the data and privacy information sheet

## How Oxevision supports your care

- It helps staff to keep you safer
- Staff can remotely check your pulse and breathing rate
- Staff disturb you less at night, helping you get a better night's sleep

## Want to know more?

Please ask [named nurse/ward manager] if you have any questions  
Staff will be happy to show you how it works and provide further information